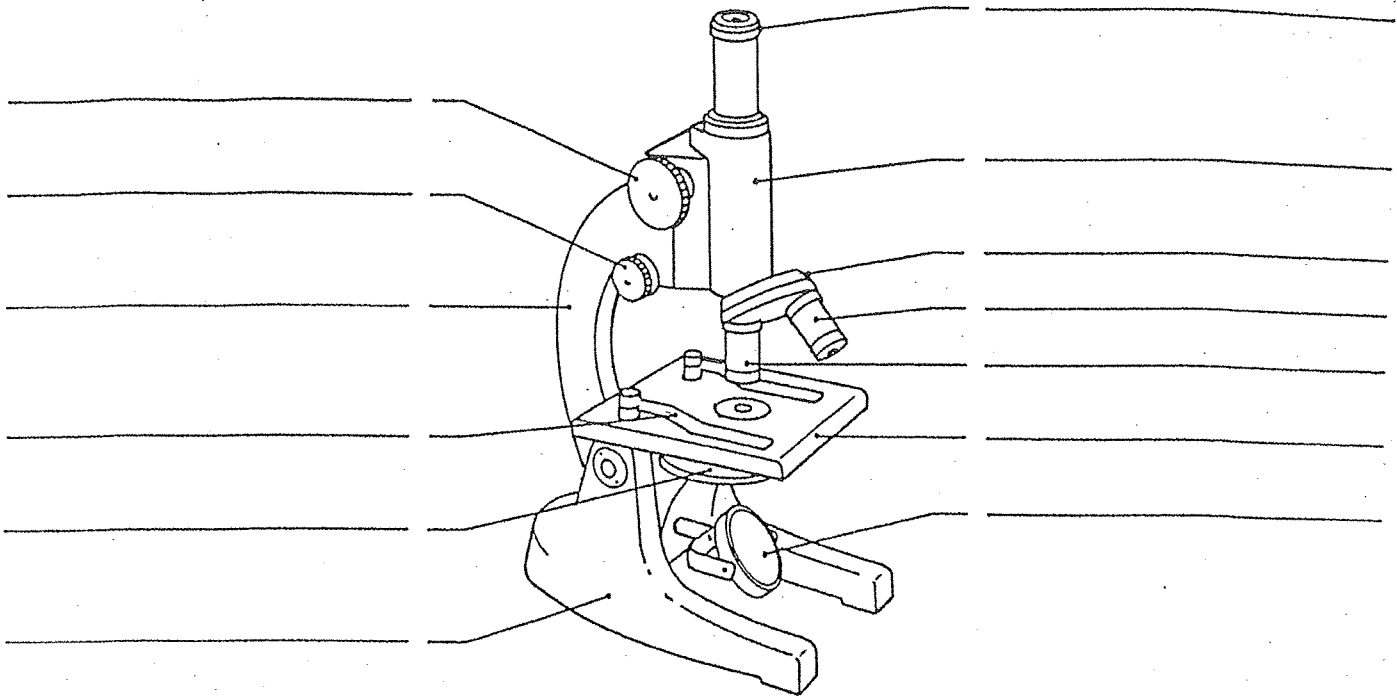


THE COMPOUND MICROSCOPE

Name _____

Label each of the following parts on the diagram of a compound microscope. Describe the purpose/use of each part.



1. base _____
2. mirror _____
3. stage _____
4. arm _____
5. fine adjustment _____
6. coarse adjustment _____
7. eyepiece _____
8. body tube _____
9. nosepiece _____
10. high power objective _____
11. low power objective _____
12. clip _____
13. diaphragm _____

Questions:

1. What is the difference between ocular and objective lenses?

2. What part of a microscope helps adjust the brightness of an image?

3. How should a microscope be carried?

4. The ocular and objectives are found at the top and bottom of what part of a microscope?

5. When focusing on low power, which knob is used to get a clear image?

6. Where are slides placed on a microscope?

7. How are slides held in place?

8. The fine adjustment knob is used to focus an image only on what power(s)?

9. The microscope you are coloring and labeling is what type of microscope?

10. What should be done whenever you are finished using a microscope?

11. What is the total magnification if the microscope is on low power (20X)?

12. What would be the magnification, if you were using a 40X objective?
